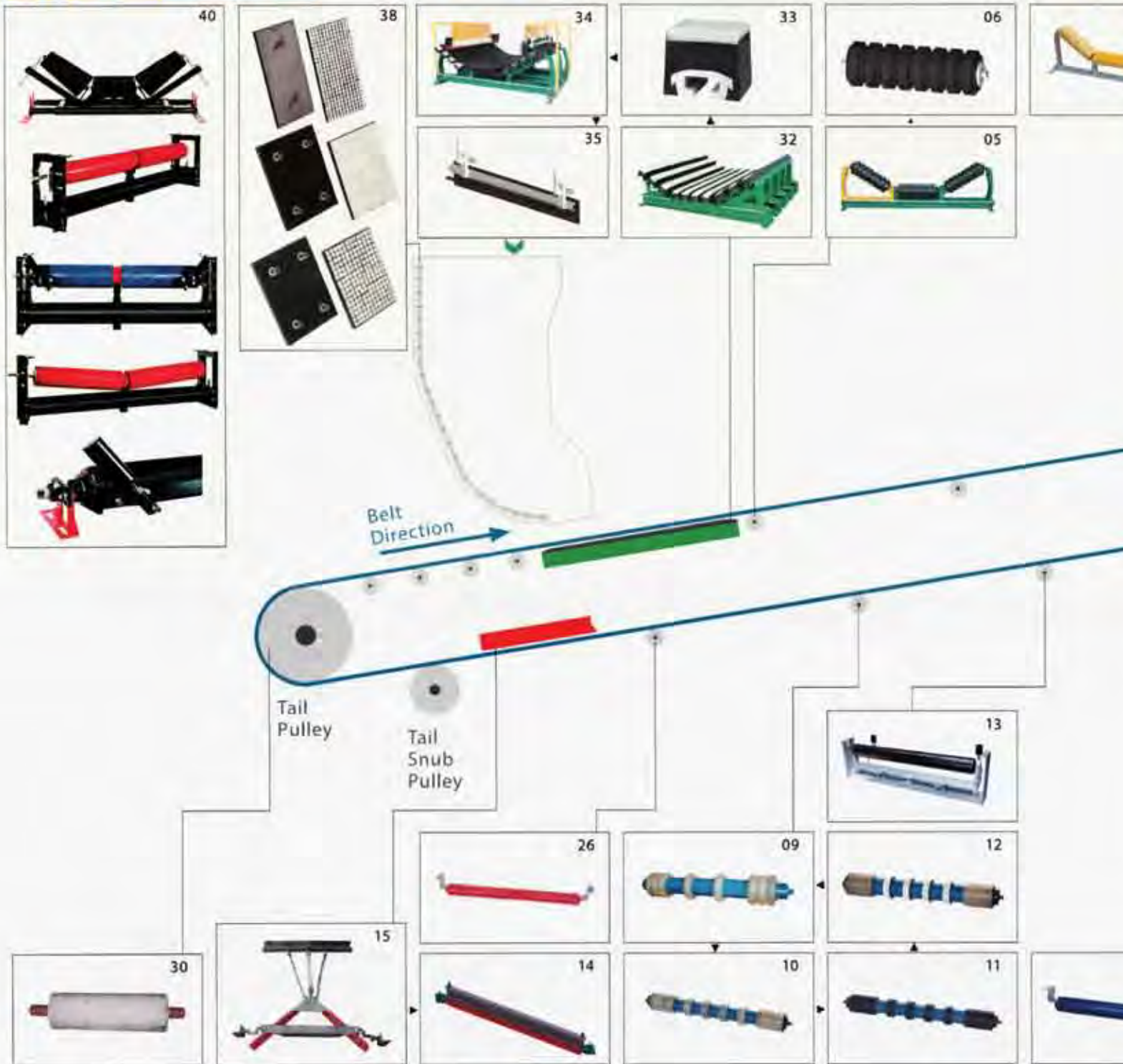




1. Conveyor & mining Products

Conveyor Viking

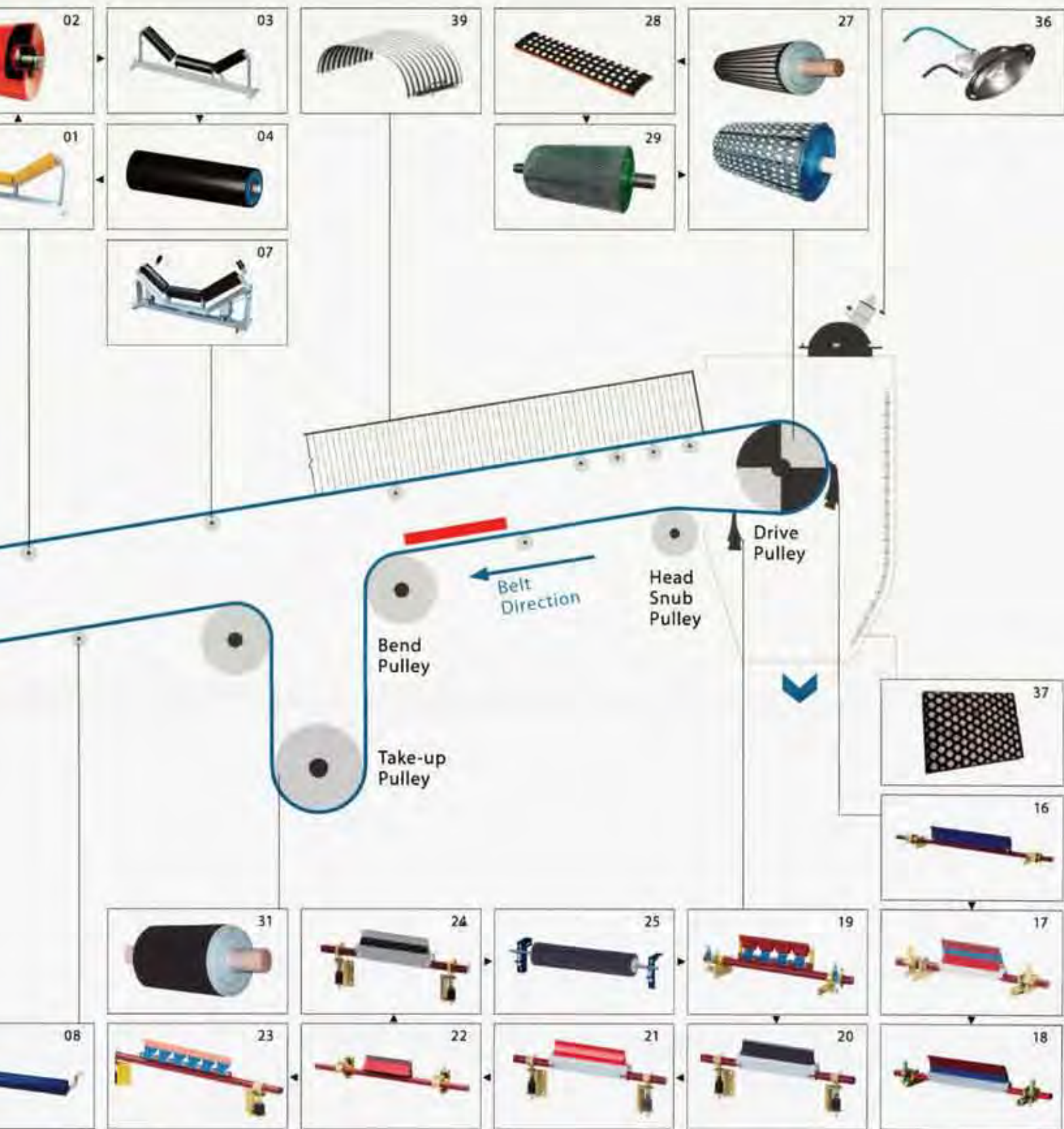


- 01. Steel Troughing Idler
- 02. Steel Roller
- 03. HDPE Troughing Idler
- 04. HDPE Roller
- 05. Impact Troughing Idler
- 06. Impact Roller
- 07. Self-Training Carrying Idler
- 08. Return Idler

- 09. Return Roller with Ring
- 10. Return Roller with Flat Disc
- 11. Return Roller with Ribber Disc
- 12. Return Roller with Ceramic Disc
- 13. Self-Training Return Idler
- 14. Plow Type Belt Cleaner
- 15. Vee Type Belt Cleaner
- 16. Primary Belt Cleaner

- 17. Primary Belt Cleaner - CRT1
- 18. Primary Belt Cleaner - C1UD
- 19. Primary Belt Cleaner - PRUS
- 20. Secondary Belt Cleaner - SBC2
- 21. Secondary Belt Cleaner - SUC2
- 22. Secondary Belt Cleaner - SRT2
- 23. Secondary Belt Cleaner - SRUS
- 24. Secondary Reversible Belt Cleaner

Distributed by: Flexi-Tech In



25. Secondary Belt Cleaner - RBC

26. Spiral Return Idler

27. Drive Pulley

28. Replaceable Pulley Lagging

29. Drive Pulley with Diamond Groove Lagging

30. Tail Pulley with Flat Ceramic Lagging

31. Take-Up Pulley

32. Heavy-Duty Impact Bed

33. Replaceable Impact Bed

34. Light-Duty Impact Bed

35. Multiply Skirt Rubber

36. PLC Fog System

37. Ceramic Liner

38. Ceramic Liner for Impact Area

39. Belt Cover

40. Tru-Trac Tracking Systems

ner -SBC2D

Conveyor Belts

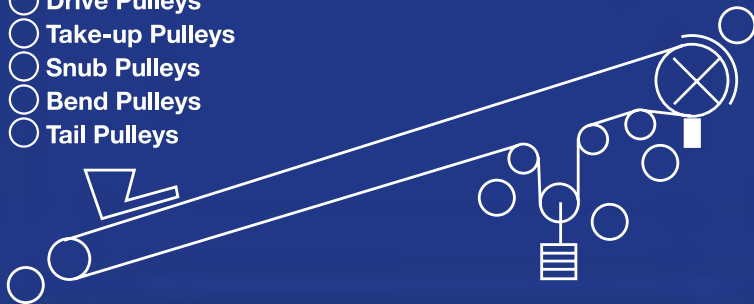
Features



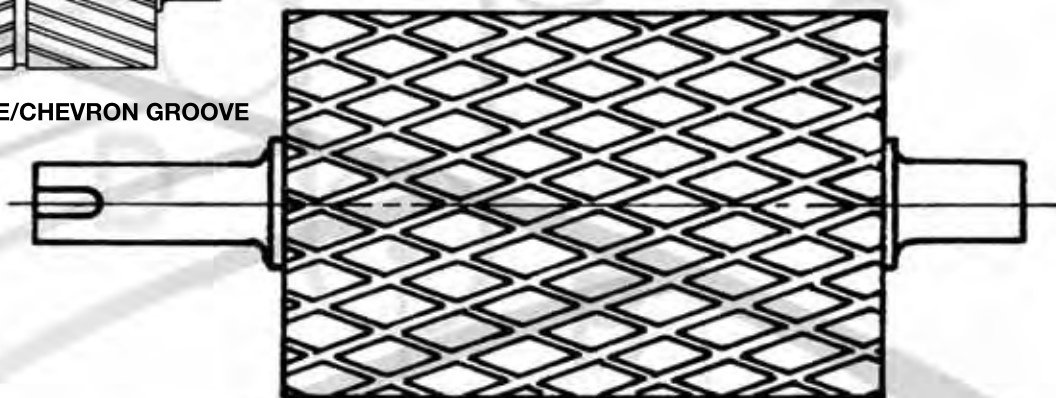
- Wide, 3.050 metres (10 ft) long construction reduces inventory and simplifies ordering
- Exclusive wear surface

W PULLEY LAGGING LOCATIONS

- Drive Pulleys
- Take-up Pulleys
- Snub Pulleys
- Bend Pulleys
- Tail Pulleys



HERRINGBONE/CHEVRON GROOVE



DIAMOND GROOVE (DRIVE PULLEY)

Lobby-Lag

Natural Grade Pulley Lagging

Razer Industries



Typical Specifications

| | |
|---------------------------------------|-----------------|
| Rubber Hardness | 62 Shore A |
| Lagging to Pulley Shell Bond Strength | Exceeds 16 N/mm |
| Rubber Abrasion Resistance (DIN) | 81 |
| Elongation | 510% |
| Tensile | 15.15 MPA |

Advantages

Provided in 250mm wide strips with an 82mm-repeating pattern for cost-effective installation and pattern matching. The wide strip also reduces the possibility of bond failure.

Superior bond between pulley shell and lagging is achieved by the provision of a special bonding layer of Neoprene rubber moulded to the back of the Lobby-Lag. This also means that abrasion resistance is not compromised to achieve high bond strength.

Superior water shedding performance from the Arrowhead Pattern over conventional diamond and herringbone patterns. Water is shed at the belt/pulley interface.

Precision moulded and press cured ensures consistent dimensional and physical properties. thickness is typically better than + 0.25mm

Is supplied pre buffed on both edges and on the bonding face for ease of installation and accuracy of the final pulley T.I.R.

Application

On all pulley shells where shell life, water dispersion and/or material build up is a concern.

For substantially higher drive friction factors and increasing service life in contaminated conditions please refer to our Ceramic Pulley Lagging Information.

Lobby-Lag

Ceramic Pulley Lagging

Razer Industries



| | |
|---------------------------------------|-----------------|
| | |
| Rubber Hardness | 62 Shore A |
| Lagging to Pulley Shell Bond Strength | Exceeds 16 N/mm |
| Rubber Abrasion Resistance (DIN) | 81 |
| Elongation | 510% |
| Tensile | 15.15 MPA |

Advantages

250mm wide strips with an 82mm-repeating pattern for cost effective installation and pattern matching.

A special bonding layer of Neoprene rubber ensures superior bond between pulley shell and lagging. This also means that abrasion resistance is not compromised to achieve high bond strength.

Ceramic tiles provide significantly longer wear life than rubber or polyurethane lagging and each tile is encased by rubber on five sides ensuring no damage to tile edges during application.

Significantly improved Co-efficient of friction values enable the reduction in take up tensions thus increasing belt and splice life.

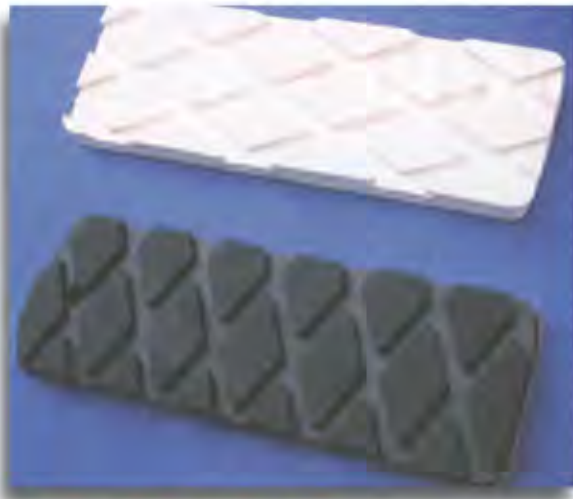
Superior water shedding performance from the Aeeowhead Pattern over conventional diamond and herringbone patterns. Water is shed at the belt/pulley interface. Can not be pumped to the centre of the pulley as with diamond lagging.

Precision moulded and press cured ensures consistent dimensional and physical properties.

Is supplied pre buffed on both edges and on the bonding face for ease of installation and accuracy of the final pulley T.I.R.

Application

For high wear, high tension, contaminated and/or wet operating environments.



Viking Mini Lagging 60
Showing Standard and white Food Grade

Product Description

Viking Mini Lagging 60 is a medium hard Premium Natural rubber compound, suitable for most lagging applications.

The rubber compound has been formulated to provide maximum wear resistance while providing a high coefficient friction for damp wet conditions insuring maximum traction and excellent dissipation of water and dirt.

The multi-purpose mini diamond pattern lagging comes in versatile sheet form, complete with a bonding layer for easy vulcanisation to metal surfaces.

Applications

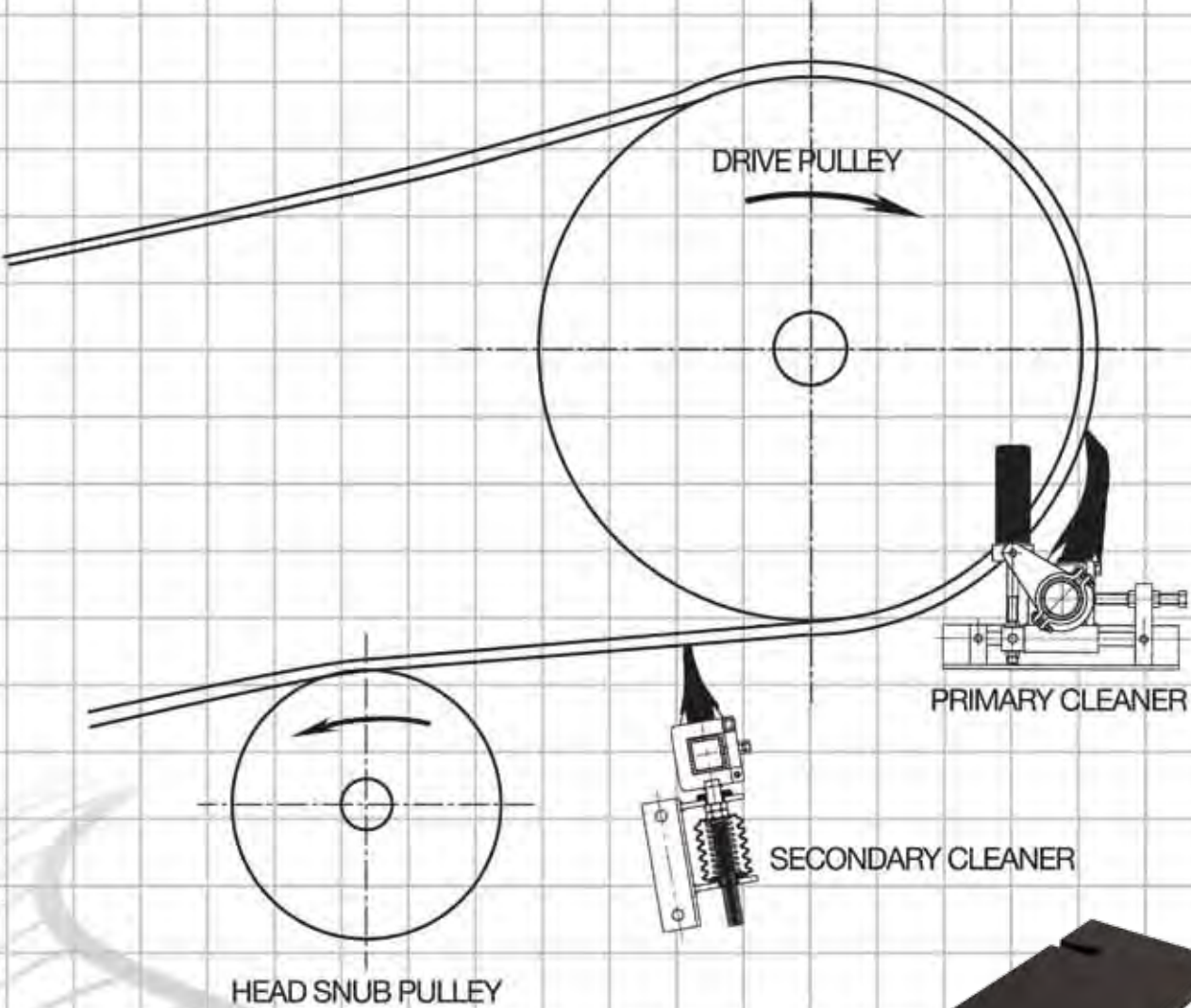
Viking Mini Lagging 60 can be used on Natural rubber conveyor belt applications on belt drive, bend, tail, take-up or where product spillage and wear on components can cause problems.

Food Grade Mini Lagging 60 is FDA compliant for use in all Food Processing applications.

Properties

| Colour | Black | White |
|---------------------|--------------------|---------------------|
| Polymer | Natural Rubber | Nitrile/SBR/Natural |
| Hardness | 60 shore A | 70 shore A |
| Tensile strength | 20.0Mpa | 10.0Mpa |
| Elongation at break | 572% | 460% |
| Abrasion (DIN53516) | 100mm ³ | 463mm ³ |
| Working Temperature | 0 to 70oC | -20 to 80oC |

Primary & Secondary Belt Cleaner



PU Scraper Bars

450mm
600mm

Belting

Quarry & Mining Wear Resistant Conveyor Belt

Viking Conveyor offers a range of quality wear resistant natural rubber conveyor belts for quarrying and mining applications.

Quarrior

Quarrior is a quality M Grade belt with high gouge and tear resistance combined with high abrasion resistance. This is an excellent utility conveyor belt designed to handle sharp rock while maintaining good abrasion resistance to fines.

Tuffply

Tuffply is a high quality D grade Super Abrasion Resistant conveyor belt which performs best in applications handling abrasive fines such as coal, fertiliser, lime, sand, shingle and palm kernel. To further extend its wear life Tuffply has an additional 1 mm of top cover.

Conti

Conti is a reliable and economical N Grade moderately abrasion resistant natural rubber conveyor belt suitable for low duty conveyors or applications where the conveyor belt is replaced as a result of mechanical damage or abuse rather than wear.

2 ply Concrete MOR

The 2 ply Concrete belt is a general purpose light weight moderately wear and oil resistant conveyor belt suitable for batch mixing, mobile crushers and scalping applications.

C15 Chevron

C15 Chevron belt is a moderately wear resistant V cleated belt designed for conveying materials up steeper inclines, generally over 15 degrees.

Stock

We hold significant volumes of our standard range of conveyor belts generally importing slabs 1800mm wide and 300m long.

Larger width and length combinations are available on indent.

Technical Specifications

| Belt Type | Top Cover (mm) | Bottom Cover (mm) | Rubber Grade | Cover Strength (MPa) | Abrasion Resistance (DIN mm ³) | Minimum Pully Diameter (mm) |
|-------------------|----------------|-------------------|--------------|----------------------|--|-----------------------------|
| Tuffply 3 ply | 5 | 2.0 | D | 18 | <90 | 400 |
| Tuffply 4 ply | 6 | 2.0 | D | 18 | <90 | 500 |
| Quarrior 3 ply | 4 | 1.5 | M | 24 | <110 | 400 |
| Quarrior 4 ply | 5 | 2.0 | M | 24 | <110 | 500 |
| Conti 3 ply | 4 | 1.5 | N | 18 | <160 | 400 |
| Conti 3 ply | 5 | 2.0 | N | 18 | <160 | 500 |
| 2ply Concrete MOR | 3 | 1.5 | MOR | 14 | <200 | 300 |
| C15 Chevron | 5 | 2.0 | N | 18 | <200 | 450 |

Skirting Rubber

We offer a number of spill control & dust suppression solutions targeted at conveyor loading & transition points

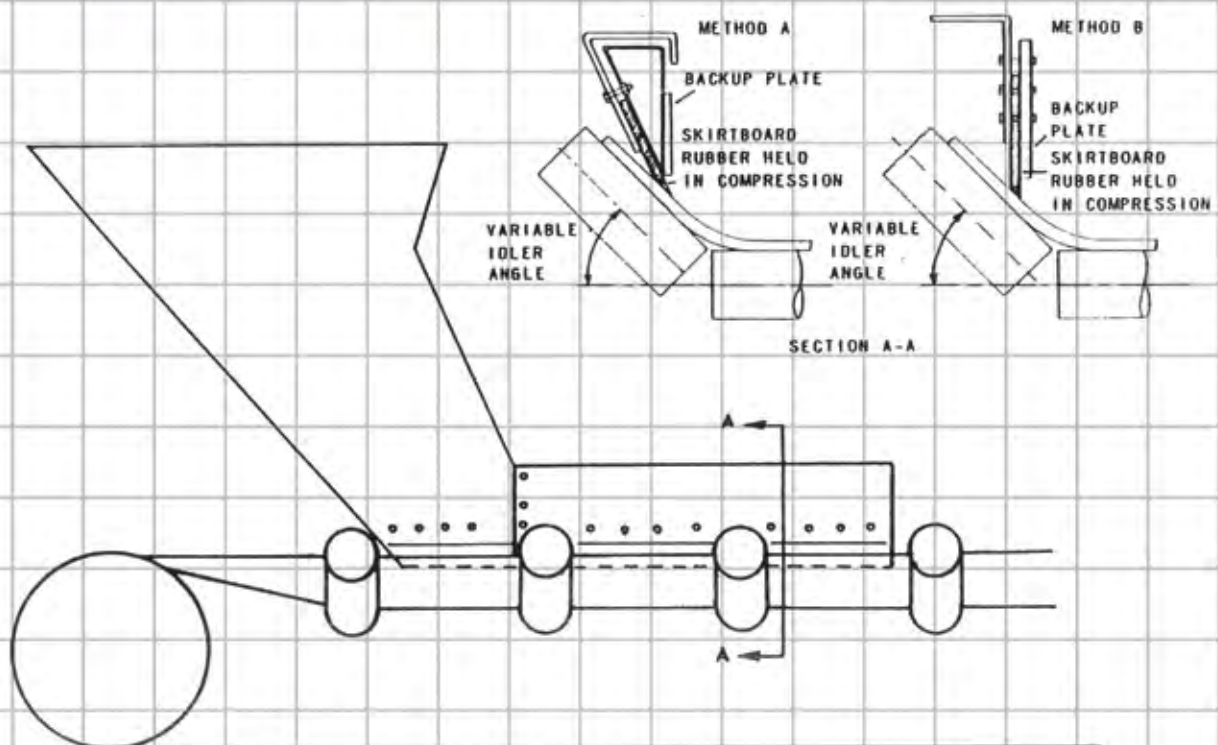
- Premium SSZ 50 Shore Green Natural Rubber & Economy 50 Shore Black Rubber Skirting
- Jimway bulb dual seal poly urethane skirting system which is ideal for conveyors handling very dusty materials

Skirting Rubber

Available in 2 widths,
150mm / 200mm

Specifications

Thickness = 10mm, 12mm
Hardness = 50 - 55 Shore A
Rubber = Natural
Roll Size = 10m

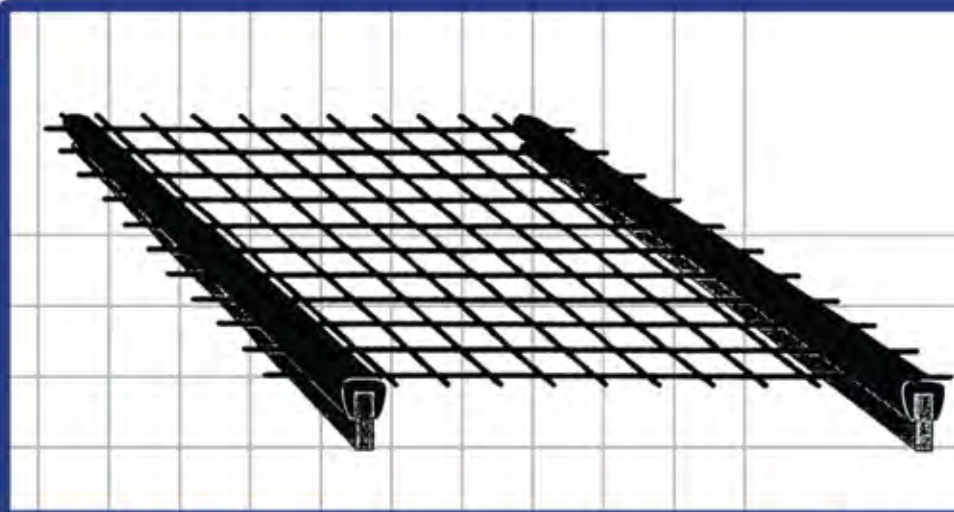


Common Skirt Board Arrangements

Screen Capping Strip

- *Cut down wear and tear on steel stringers*
- *Easy to fit, easy to replace*
- *Tough abrasion resistant rubber*

Screen rubber caps are tough, abrasion resistant rubber extrusions which are used to cap the steel stringers which support vibrating screens used in sizing and recovery at mining and quarry operations.



STANDARD ROLL LENGTH - 20 METRES

KCV 30

15.9mm channel width
Also known as
'John Strip'



KCV132

20mm channel width



KCV 85

9.5mm channel width



1169

Nominal 20mm channel width
Designed to fit over
'railway line' stringers



KCV 103

12.7mm channel width



1170

Nominal 25mm channel width
Designed to fit over
'railway line' stringers



Rollers

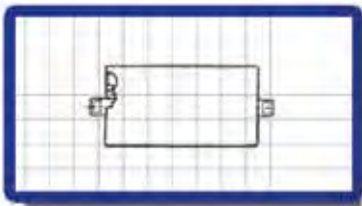
Conveyor Rollers

Viking Conveyor has been supplying Jimway Steel and Synthetic conveyor rollers to major mining and quarrying operations through out New Zealand for over 12 years.

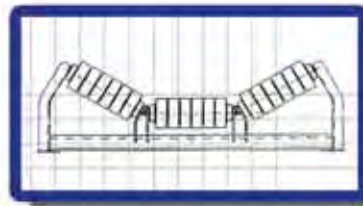
- We stock trough and return rollers to suite 450, 600, 750, 900 and 1200mm wide belts in 114mm diameter in Steel and Synthetic and 127mm in Steel.
- We carry a full range of impact and rubber disc return rollers along with a range of rubber lagged rollers for improved material release

Roller Trough Frames

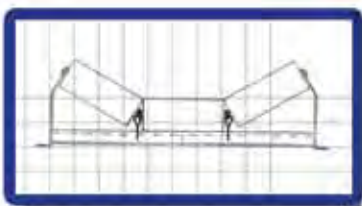
We stock standard painted and galvanised 30 degree trough frames to suite 450, 600, 750, 900, 1050 and 1200mm wide belts and can supply on short notice any other trough frame configuration.



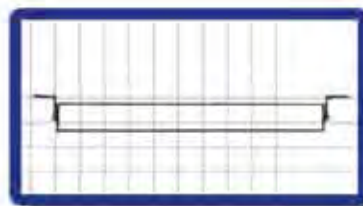
Trough Rollers
PVC for corrosive conditions



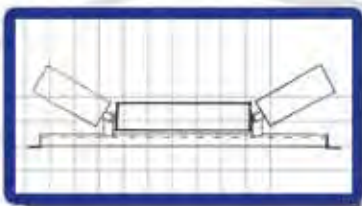
3 Roll Inline Heavy Duty Impact Set



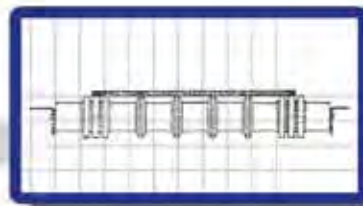
3 Roll Off - Set Troughing Set



Return & Flat Carry Idlers



3 Roll Offset Cantilever Troughing Set



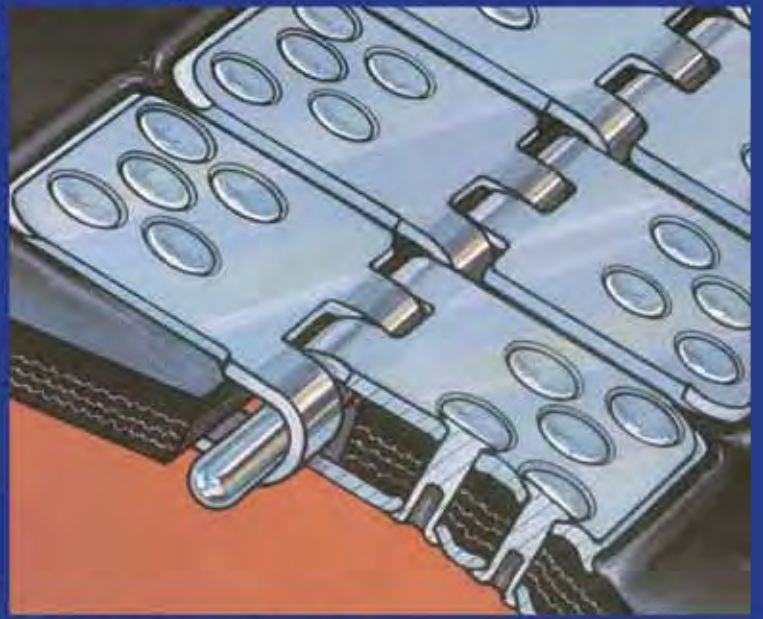
Rubber Disc Return Idler
(NL type)

Belt Fasteners

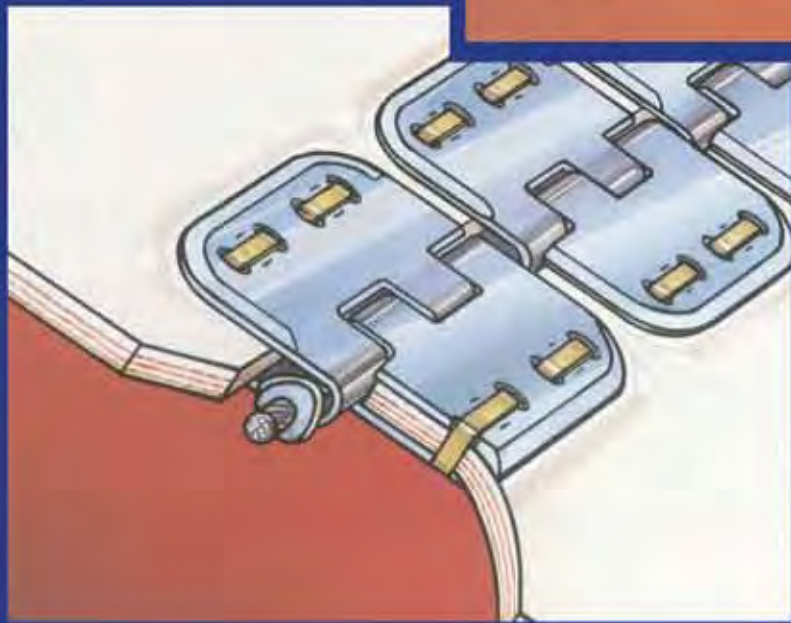
Bolt Solid Plate Fasteners



Rivet Hinged Fasteners



Staple Fasteners



Local Distributor for *DYNO*



Roller Conveyors Systems and Components



SKATE WHEELS
Versatile product that can be used in a variety of applications



TRANZBAND
Powered Accumulation Conveyors.
Safe Quiet, efficient



DYNOPIPE ROLLERS



STAINLESS STEEL ROLLERS



LIGHT ROLL
Light weight galvanised Gravity with conveyors.

BEARINGS & ENDCAPS
A large range of bearings and endcaps



GALVANISED ROLLERS



EZYROLL
A robust gravity conveyor with a range of rollers to suit



MULTIDIRECTIONAL ROLLERS



MINIROLL
Robust roller system with multiple uses



DYNO CHAIN
Thermoplastic chain and components

TRANZBELT

